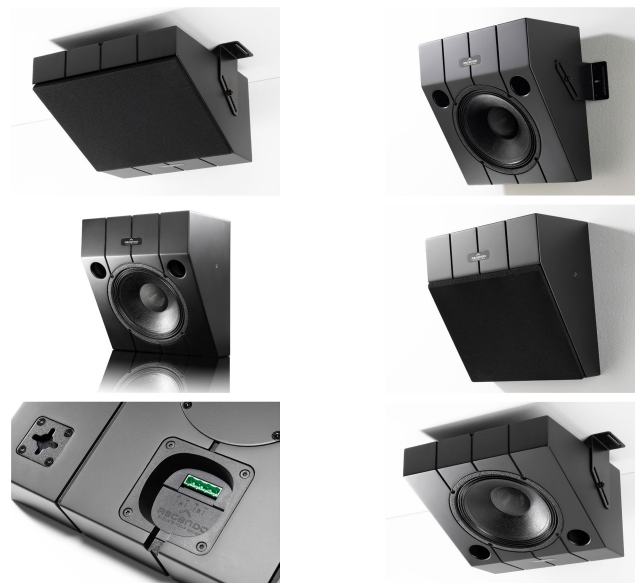


TECHNICAL DATA

THE 10 PASSIVE WEDGE 30

ASCENDO

ELEVATE YOUR SOUND



Speaker Type	10" time-coherent point-source coaxial
Principle	Vented
Passive Active	Passive
Woofer	10" woofer
Tweeter	1 3/8" voice coil diameter, compression driver
Recommended ASCENDO Amplifiers	AIA2-1404, AIA2-2704, AIA4-2404, AIA8-2704, AIA8-6004
SPL (Peak / half space 2pi)	Measured Data 120 dB (Cont.) / 130 dB (Peak) 120 dB @ 100 Hz 130 dB @ 150Hz
Frequency Range	Measured Data (Without DSP) 100 Hz - 20 kHz / -3dB
Efficiency	91 dB / 1 W/m 4 pi, 97 dB / 1 W/m 2 pi
Power Handling	500 W
Impedance	8 Ω
Directivity Horizontal x Vertical in deg°	85° x 85°
Input Terminal	4-conductor Phoenix 12 AWG (3.3 mm ²)

Enclosure	Internally braced MDF
Dimensions (W/H/D)mm (Without grille)	360 382 218 (Vertical) 360 218 382 (Horizontal)
Dimensions (W/H/D)inch (Without grille)	14 3/16 15 1/16 8 9/16 (Vertical) 14 3/16 8 9/16 15 1/16 (Horizontal)
Packing Dimensions (W/H/D)mm	510 510 350
Packing Dimensions (W/H/D)inch	20 1/16 20 1/16 13 13/16
Weight	24.69 lbs 11.2 kg
Gross Weight	31.96 lbs 14.5 kg
Finish	Matte black / White glossy
Mounting	Metal wall or ceiling mounting brackets allowing further angling in two axes, 8 x wall mount brackets for multiple hanging options, VESA 200 x 100 mounting points

The THE10 PASSIVE WEDGE 30 is supplied with a front cover as standard



Technical modifications subject to change without further notice | Technische Änderungen vorbehalten